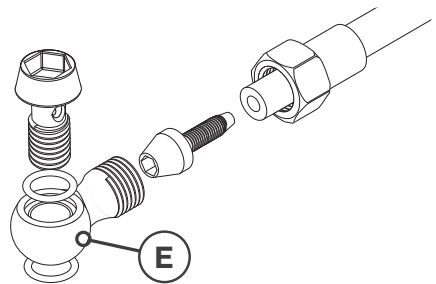
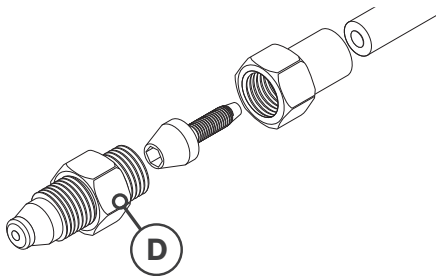
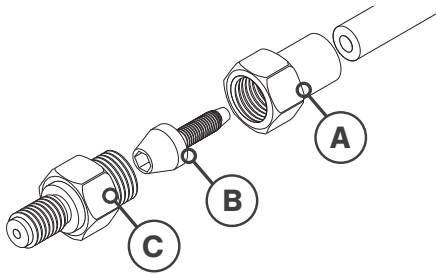
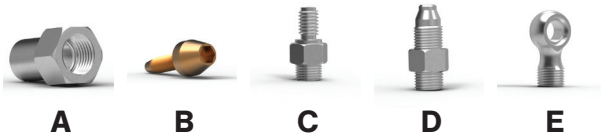


## BRAIDED HYDRAULIC HOSE KIT

**CONNECTION TYPES:** There are 3 different types of fittings that can be used to connect the hose to either the caliper or lever. All fittings use the same 'hose connector' and 'barb'.

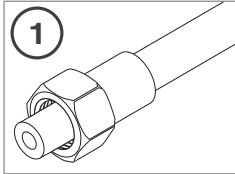


### Parts & Tools Required

- Surgical/nitrile gloves (when bleeding the system)
- 3mm hex key
- 5mm hex key
- Cable cutters
- 2 x 8mm cone/ring or adjustable spanners

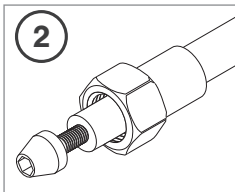
**WARNING:** To avoid serious injury, be sure to understand these instructions fully before use. If these warnings are not adhered to, the brake system may not work correctly and could result in serious injury.

## KIT FITTING INSTRUCTIONS

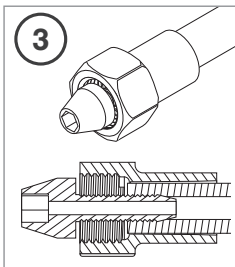


1 Cut the hose to the desired length then push the hose connector (A) on to the end of the braided hose so that around 10-15mm of hose is showing.

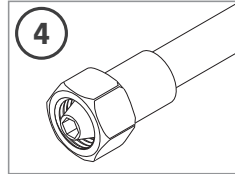
Make sure that the end of the hose is circular and concentric before moving on to the next step.



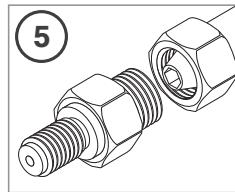
2 Using a 3mm hex key, firmly press and screw the barb (B) approximately half way into the hose.



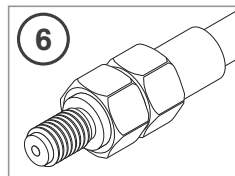
3 Pull the hose connector (A) towards the barb (B) making sure the thread is fully forward of the hose. (See cross section bottom left)



4 Continue to screw the barb (B) all the way in until it hits the hose. Be careful not to over tighten as the thread will tear the inner lining of the hose, leading to failure.



5 Using the appropriate caliper or lever fitting (C,D,E), screw it into the hose connector (A).



6 Using two 8mm cone/ring spanners, firmly tighten the hose connector (A) and fitting (C,D,E) together. This will compress the brass barb (B) between the two parts, creating a liquid tight seal.

7 Bleed as per brake manufacturers instructions.

### IMPORTANT NOTE:

If you are unsure of the correct way to fit and maintain any parts on your bike, you will need to consult a qualified bicycle mechanic. We cannot accept responsibility for any failures due to incorrect fitting or maintenance.



CERT NO'S TS549872, FM549871 & EMS539839

Fibrax is accredited by the British Standards Institute to ISO9001 for quality and ISO14001 for environmental management. Fibrax brake pads meet or exceed relevant BS EN bicycle standards.